

TORNADO®

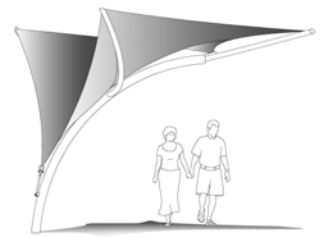


Our **Tornado®** fabric shading elements provide imaginative and stunning shade independently or grouped together. Available in two sizes and perfect for shading walkways, seating, or individual play activities, the Tornado® is proudly U.S. made and will add aesthetic appeal to any public environment.

Gracefully arching steel piping arms radiate outward from a curved central support column to create a 5-point tensioned shade canopy which makes a bold architectural statement about its determination to shade stylishly. Available with electrical accommodations for beautiful fabric shade structures with night lighting!

The **Tornado®** features our remarkable **CoolNet™** shade fabric in a variety of colors for maximum air cooling and protection from up to 99% of the sun's dangerous U.V. rays. Plus, removal and re-attachment of the canopy is a breeze with our simple stainless steel one-point fastening system built in!

Visit us at www.shadesystemsinc.com to see our entire line of commercial shade structures for sun protection in public places.



Shade Systems, Inc.
4150 SW 19th Street
Ocala, FL 34474

Toll Free: 1.800.609.6066
Local: 352.237.0135
Fax: 352.237.2256

Email: info@shadesystemsinc.com
Web: www.shadesystemsinc.com

Shade 
systems™
the coolest solutions under the sun®

Tornado® Specifications

Central support column: schedule 40 black steel pipe

Support Arms: cold-formed tubing per ASTM A-135 and ASTM A-500

Weldments: factory-welded by Certified Welders to American Welding Society (AWS) specifications and to the highest standards of quality workmanship.

Fabric: CoolNet™ polyethylene knitted shade fabric with reinforced corners. Complies with NFPA 701, ASTM-E84, and CAFM-13115. Colors to be specified.

Coatings: Parts are completely cleaned, sand-blasted, and a hot zinc phosphate pretreatment with non-chromic sealer is applied. Primer and then powder-coating are electrostatically applied and oven-cured at 375 to 425 degrees Fahrenheit. Polyester powders shall meet or exceed ASTM standards for Adhesion, Hardness, Impact, Flexibility, Overbake Resistance, and Salt Spray Resistance. Colors shall be specified.

Hardware: 316 Stainless Steel.

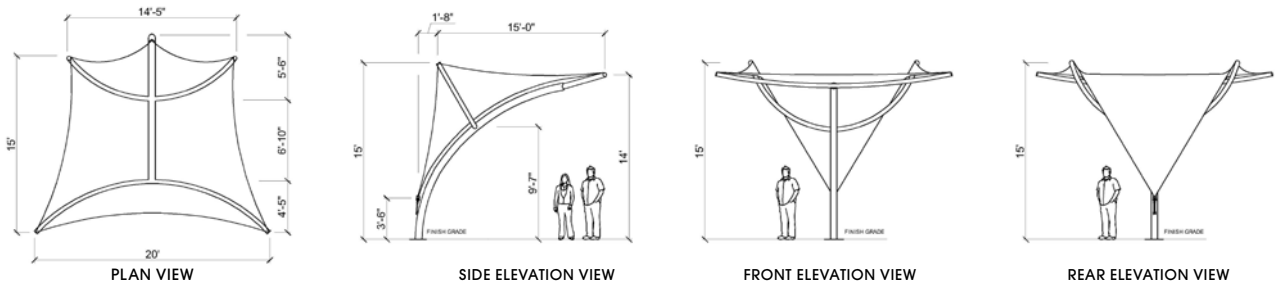
Cables and fastening mechanism:

Minimum 1/4" diameter stainless steel cables are factory-looped at the ends and concealed in hems. Canopy is tensioned at a single point near the base using a stainless steel adjustment bolt which, when turned, tensions the fabric for a taut fit.

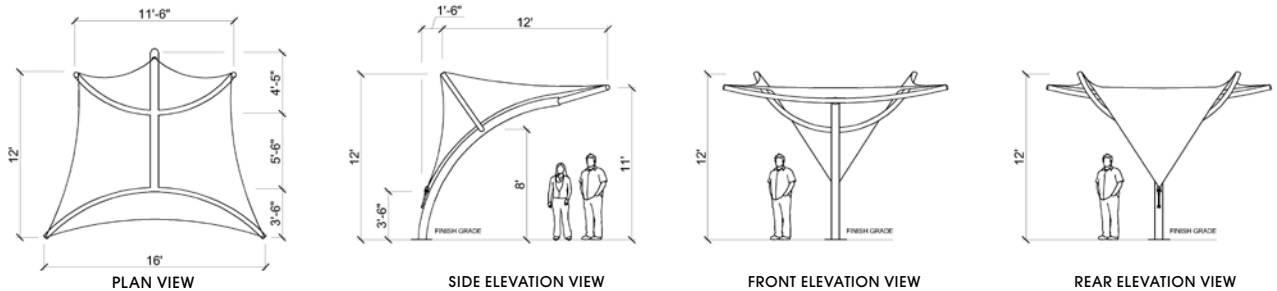
Options:

- Electrical accommodations in structure for customer's lighting fixtures
- Stainless steel structure

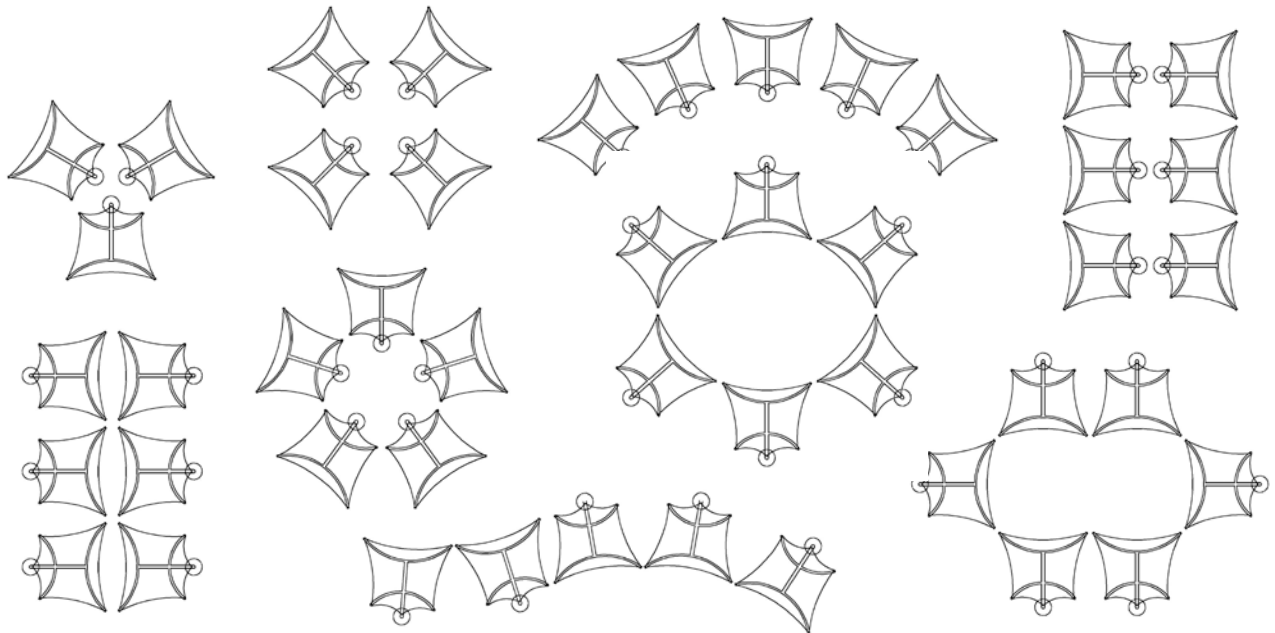
A
(Large)



B
(Small)



Sample Configurations



For engineered wind data and other information, please also refer to our general product specifications. Because of our commitment to continuous product development and improvement, Shade Systems reserves the right to change specifications at any time without notice.